

COMPANY PROFILE

Luxsant Construction and Projects (PTY) LTD

Registration Nr.: 2012/026063/07



LUXSANT 
CONSTRUCTION & PROJECTS

CONTENTS



01 EXECUTIVE SUMMARY

Company Overview
Core Values
Vision & Mission

02 CORE SERVICES

Service Offerings
Specialties

03 PROJECT PORTFOLIO

Flagship Projects
Core Projects
Projects Showcase

04 CLIENTELE

Clients List

05 TEAM & LEADERSHIP

Leadership Team

06 SAFETY & COMPLIANCE

Company Safety & Compliance

07 CORPORATE GOVERNANCE

Audit Committee
Risk Committee
Nomination Committee
Remuneration Committee
Governance Policies

08 GENERAL INFORMATION

Contact Information
Banking Information



01

EXECUTIVE SUMMARY



OVERVIEW

Luxsant Construction & Projects (Pty) Ltd was established in 2012 by founder Lux Mahasha, who channeled decades of experience in the construction industry into creating a company that has grown into one of South Africa's most promising construction powerhouses.

Initially specializing in plastering, waterproofing, tiling, and painting, the company now spans three major divisions: Building Construction, Civil Engineering, and Roads & Earthworks.

With offices strategically located in prime areas, Luxsant continues to deliver excellence across the full spectrum of construction activities..



CORE VALUES



INTEGRITY

Integrity is the foundation of our dealings with clients, partners, and employees. At Luxsant, we believe in conducting business with honesty and transparency, ensuring that our actions are always aligned with our words. This commitment to integrity builds trust and fosters long-term relationships with our stakeholders.



CLIENT SATISFACTION

Client satisfaction is our ultimate goal. We strive to understand and exceed our clients' expectations by providing personalized service and tailored solutions. Our customer-centric approach ensures that we remain flexible and responsive to client needs throughout the project lifecycle.



EXCELLENCE

Excellence is at the heart of everything we do and embodies our motto, "*Mintirho Ya Vulavula*"—*Good Deeds Speak Volumes*. At Luxsant, we hold ourselves to the highest standards and strive for excellence in every facet of our operations. This commitment ensures that our projects are not only completed on time and within budget but also exceed client expectations in quality and detail.

VISION & MISSION

VISION



To lead the region in understanding and exceeding customer needs in the building and construction industry.

We aim to set the benchmark for excellence by deeply understanding our customers' needs and consistently delivering innovative and effective solutions. Our goal is to be recognized as the trusted partner in the industry, renowned for our commitment to quality and client satisfaction.

MISSION



To deliver excellence through customer-driven solutions, adding value with integrity, innovation, and unmatched service.

We are dedicated to putting our customers at the heart of everything we do, offering services that not only meet but exceed their expectations. By fostering partnerships built on trust, transparency, and honesty, we ensure timely delivery and superior quality in every project we undertake.



Mintirho Ya Vulavula

We embody our motto, "*Mintirho Ya Vulavula*"—a Tsonga phrase that means "*Good Deeds Speak Volumes.*"

This powerful ethos defines who we are and drives everything we do. We let our outstanding work be the voice that resonates, leaving a lasting impact through actions that speak louder than words.



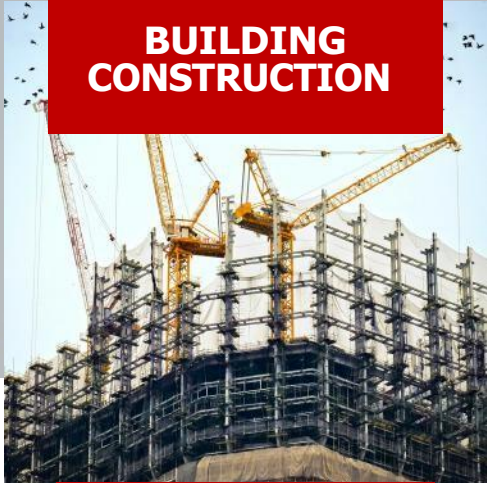


02

CORE
SERVICES

SERVICE OFFERINGS

**BUILDING
CONSTRUCTION**



**CONCRETE
WORKS**



PLASTERING



WATERPROOFING



PLUMBING



TILING



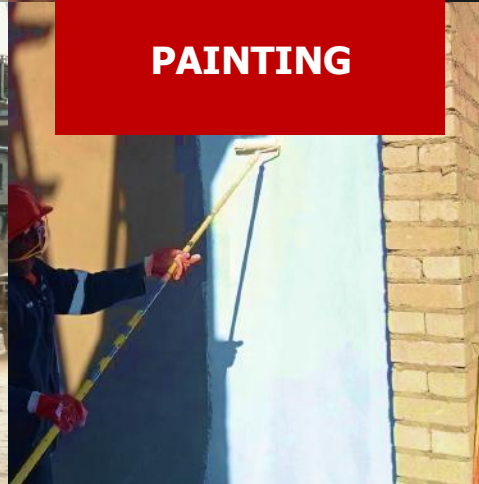
**ALUMINUM
WORKS**



PAVING



PAINTING



ELECTRICAL





CORE SERVICES

SPECIALITIES

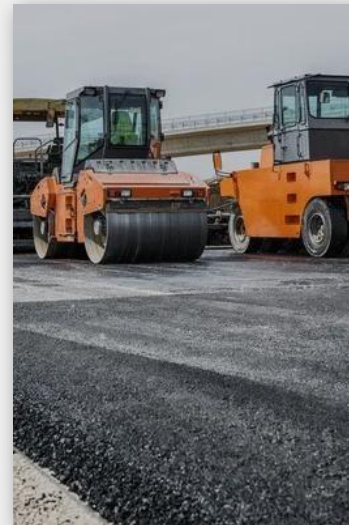
At Luxsant, we pride ourselves on our specialized expertise, which sets us apart in the competitive construction industry.

Our specialty areas enable us to deliver exceptional results tailored to meet diverse client needs.



BUILDING & CIVIL ENGINEERING

Luxsant's Building division is recognized as a leader in the emerging South African building industry. Our reputation for quality, reliability, and delivering projects within budget is well-earned and consistently demonstrated through our work. The Civil Engineering division complements our building projects, offering a robust portfolio of services that enhance our overall margin streams and solidify our market position.



ROADWORKS & EARTHWORKS

Our Roads and Earthworks division operates across multiple traditional civil engineering disciplines, fortified by strategic acquisitions that add specialized capabilities. This division is particularly adept at navigating the South African construction landscape, leveraging effective team collaboration with consultants and clients to achieve mutually beneficial outcomes.



03

PROJECT
PORTFOLIO

FLAGSHIP PROJECTS



GAMSBURG & BLACK MOUNTAIN MINE

Vedanta Resources



Main Contractor

Luxsant



Units

18 of 26
Apartments
handed over



Contracted Function

Building
Concrete
Brickwork
Panting
Tiling
Paving
Earthworks
Plastering & Screeding



Reference Information

Derol Van Wyk
Projects Manager
+27 82 456 8818



FLAGSHIP PROJECTS



EDENVALE FLATS

Group 5



Main Contractor

Group 5



Units

380 Units



Contracted Function

Concrete
Brickwork
Plastering & Screeding



Reference Information

Dion Barnardo
Director
+27 82 456 8818



CORE PROJECTS

Main Contractor	Project's	Units	Contracted function	Personnel(s)
Group 5	Segoreng Housing	300 Houses	Plastering & Screeding	Eduard Page Contract Manager +27 82 379 4429
	Botshilo Private Hospital, (Soshanguwe)	5 Blocks	Plastering & Screeding	Dion Barnardo Director +27 82 456 8818
	Valentia Flats (Musina)	200 Units	Concrete Brickwork Plastering & Screeding	Johan Human Site Agent +27 82 379 4890
	Lonmin (Marikana Mine)	60 Units	Plastering & Screeding	Gawie VD Merve Contract Manager +27 82 453 8198
	Dingleton Project (Kathu)	Dingleton Shopping Centre Kamore Acc Dingleton Police Station Primary School High School & Houses	Concrete Brickwork Plastering Screeding & Plastering	Dion Barnardo Director +27 82 456 8818
Liviero	Military Health Base - Depot (Pretoria)	7 Blocks	Plastering & Screeding	Stopper Rantsiapa Senior QS +27 72 204 1636 Pieter Van Bosch Site Manager +27 71 171 4547
	Central University of Technology (Bloemfontein)	5 Blocks	Plastering & Screeding	Pieter Van Bosch Site Manager +27 71 171 4547
	Natalspruit Doctors and Nurses Residents	7 Blackos	Paving & Parking Walkways Tiling	Eddie Horne Site Agent +27 83 401 1919 Stopper Rantsiapa Senior QS +27 72 204 1636

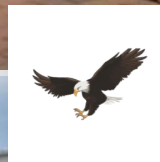
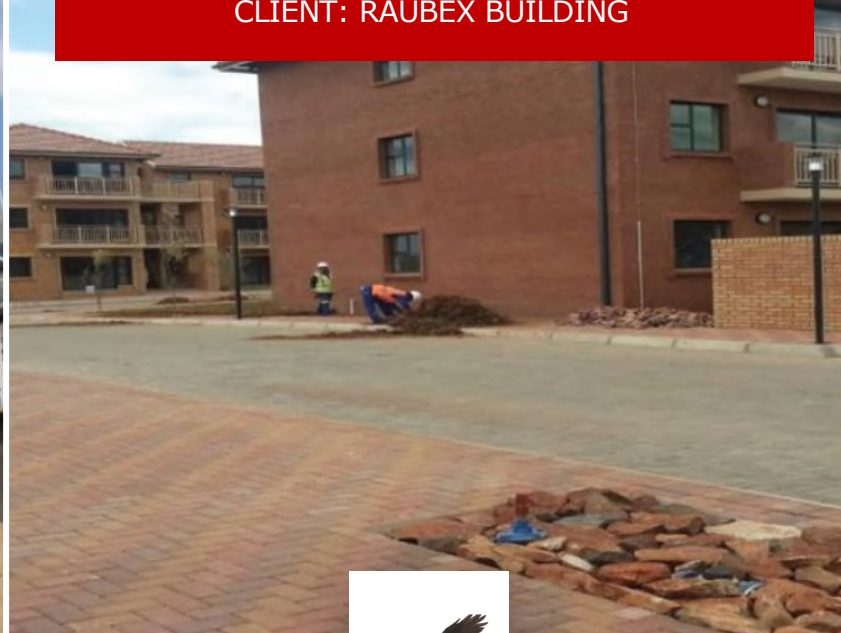
APARTMENTS IN MIDRAND

CLIENT: LIVIERO BUILDING



VALENCIA MINE

CLIENT: RAUBEX BUILDING



COMMUNITY CENTRE – DINGLTON



AGS DINGLETON CHURCH



CUT BLOEMFONTEIN STUDENT ACCOMODATION

CLIENT: ENZA CONSTRUCTION



KEMPTON PARK APARTMENTS

BLACK MOUNTAIN MINE - BMM

EXPANSION OF FILTER PRESS,
CARPORTS, BUND AREA



BLACK MOUNTAIN MINE

EXTENSION OF TUNNEL & GANTRY



BLACK MOUNTAIN MINE

PLANT OFFICES & AUDITORIUM



KATHU MINE



PAVING – KATHU, DINGLETON
PAVING DONE AT HOUSES & BUILDINGS



**ACCOMODATION APARTMENTS –
MARIKANA**



04

CLIENTELE

CLIENTELE

CLIENT LIST





05

**TEAM &
LEADERSHIP**

TEAM & LEADERSHIP

LEADERSHIP



LUX MAHASHA

DIRECTOR

Lux has over 20 years of invaluable experience and expertise in the building and construction. His proficiency, strong leadership and uniquely hands-on approach is what has and will continue to ensure maximum client satisfaction.



06

**SAFETY AND
COMPLIANCE**

COMPANY SAFETY & COMPLIANCE

Luxsant is unwavering in its commitment to the safety of every individual involved in our projects. We strive to create a safe working environment where accidents are prevented, and employee well-being is prioritized.



SAFETY POLICIES

COMMITMENT TO SAFETY

Luxsant is unwavering in its commitment to the safety of every individual involved in our projects. We strive to create a safe working environment where accidents are prevented, and employee well-being is prioritized.

ZERO HARM POLICY

Our zero harm objective means operating without fatalities and minimizing lost-time injuries. We continuously aim to enhance our safety performance through the seamless integration of planning, implementation, and performance review processes.

COMPLIANCE & CERTIFICATIONS

SAFETY MANAGEMENT SYSTEM

Luxsant's Safety Management System (SMS) is OHSAS 18001:2007 certified, ensuring a documented and methodical approach to safety. The SMS defines how risks are identified and managed company-wide, continuously improving our safety metrics

MANAGEMENT RESPONSIBILITY

Each operational manager is responsible for implementing the Safety Management System and adhering to company OHS policies and procedures. This decentralized approach ensures accountability at all levels of our organization.

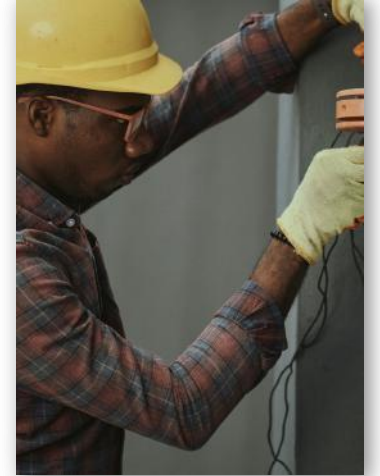
MEDICAL FITNESS PROGRAM

PROGRAM DETAILS

Luxsant has a medical fitness program to ensure that every employee is fit to work in a construction environment. This program effectively manages high-risk medical conditions such as high blood pressure, diabetes, and epilepsy, as well as occupational diseases.

HIV/AIDS POLICY

Recognizing the impact of HIV/AIDS, particularly in Africa, Luxsant has a strong policy committed to confidentiality, non-discrimination, and providing awareness, testing, and treatment programs. Regular HIV/AIDS awareness, counseling, and testing events are conducted to support our employees and their families.





COMPANY SAFETY & COMPLIANCE

SAFETY TRAINING

ON-SITE SAFETY TRAINING

Topics include working at heights, scaffold erecting and dismantling, scaffold inspection, manual material handling, rigging and slinging, use of electrical power and hand tools, and first-aid training.

MANAGEMENT TRAINING

Our management team undergoes regular safety training to stay updated on the latest safety protocols and best practices, ensuring that safety is prioritized at all levels.

CULTURE OF SAFETY

EMPLOYEE RESPONSIBILITY

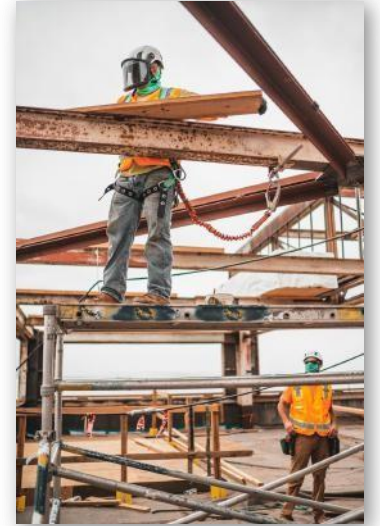
Beyond policies and procedures, Luxsant invests in cultivating a culture of safety where employees are encouraged to take responsibility for their own and their colleagues' safety.

REPORTING NEAR MISSES

We promote an environment where employees can report 'near-misses' without fear of reprisal. This proactive approach allows us to identify potential hazards and implement solutions to prevent future incidents.

SAFETY INCENTIVE PROGRAMS

We have an incentive program that rewards employees and stakeholders when Occupational Safety and Health (OSH) targets are met.





07

**CORPORATE
GOVERNANCE**

CORPORATE GOVERNANCE

AUDIT COMMITTEE

The Audit and Risk Committee plays a crucial role in ensuring the financial integrity and risk management of the company. This committee is responsible for fulfilling the dual functions of overseeing both the audit processes and the management of risks across the organization.

ROLES & RESPONSIBILITIES

AUDIT

The committee provides oversight of the financial reporting and disclosures of Luxsant, ensuring compliance with the Companies Act of South Africa. It reviews audit plans, financial information for public disclosure, and the effectiveness of internal controls. It also monitors the extent of non-audit services undertaken by external auditors.

RISK

The committee establishes and maintains an understanding of the risk universe, undertakes thorough business risk assessments, compiles risk profiles, monitors risk management, and ensures governance reporting requirements are satisfied.

MEETINGS

The committee meets at least four times a year to discuss audit-related issues and at least twice a year to discuss risk-related issues, with invitations extended to the CEO, senior management, internal and external auditors, and other relevant parties.

COMPOSITION

CHAIRPERSON

Lux Mahasha

CORPORATE GOVERNANCE

RISK COMMITTEE

The Risk Committee is a vital component of the company's corporate governance structure, dedicated to ensuring that risks are effectively managed across all areas of the business. The committee is responsible for overseeing the company's risk governance framework, which is essential for maintaining organizational resilience and achieving strategic objectives.

ROLES & RESPONSIBILITIES

RISK IDENTIFICATION

Establishing and maintaining a comprehensive understanding of the risks affecting the company's objectives.

RISK MANAGEMENT

Monitoring risk management activities, ensuring the effectiveness of risk mitigation strategies, and addressing governance reporting requirements.

COMPOSITION

CHAIRPERSON

Lux Mahasha

CORPORATE GOVERNANCE

NOMINATION COMMITTEE

The Nomination Committee plays a crucial role in shaping the leadership and governance of the company by identifying and recommending individuals for board appointments. This committee is responsible for ensuring that the board of directors is composed of individuals with the diverse perspectives, skills, and experiences necessary to guide the company effectively

ROLES & RESPONSIBILITIES

BOARD APPOINTMENTS

Evaluates specific skills and gender diversity when recommending candidates.

SUCCESSION PLANNING & DEVELOPMENT

Ensures formal succession plans for the board, CEO, and senior management.

NOMINATION PROCESS INTEGRITY

Oversees the integrity of the nomination process.

COMPOSITION

CHAIRPERSON

Lux Mahasha

CORPORATE GOVERNANCE

REMUNERATION COMMITTEE

The Remuneration Committee plays a pivotal role in maintaining the integrity and motivation of the company's leadership by ensuring that executives and senior management are compensated in a fair and responsible manner. This committee assists the board in developing and overseeing the company's remuneration policies, aligning them with the organization's strategic objectives and long-term success.

ROLES & RESPONSIBILITIES

REMUNERATION POLICY DEVELOPMENT

Planning and structuring the company's remuneration policy.

EXECUTIVE & NON-EXECUTIVE COMPOSITION

Determining both executive and non-executive remuneration packages.

PERFORMANCE-BASED INCENTIVES

Advising on performance and incentive-based schemes.

EMPLOYEE CONTRACT REVIEW

Advising on the conditions stipulated in employment contracts.

MEETINGS

Biannually, to discuss bonuses, salary increases, and other remunerative matters.

COMPOSITION

CHAIRPERSON

Lux Mahasha

GOVERNANCE POLICIES

QUALITY POLICY STATEMENT

We focus on delivering top-quality products, driven by our "Execution Excellence" strategic objective.

Our management skills and resources are mobilized efficiently and cost-effectively to execute projects to the highest quality standards. We continuously improve our processes to ensure compliance with internal and external specifications, thereby enhancing client satisfaction.

REMUNERATION

Remuneration is determined by management based on the company's remuneration policy and overseen by the Remuneration Committee. We offer competitive packages, reward high performance, establish key performance indicators, and design incentive packages, including non-financial rewards for key employee retention. Equal pay is offered to both male and female employees of equivalent experience.

EMPLOYEE RELATIONS & CONDITIONS OF EMPLOYMENT

Luxsant is committed to providing a safe, healthy, and enabling workplace characterized by mutual respect, fairness, integrity, non-discrimination, and open engagement. We comply with all relevant legislation governing conditions of employment and labor relations in South Africa.

TRAINING & DEVELOPMENT

We provide training opportunities to community members where possible. Luxsant supports collective bargaining rights and maintains recognition agreements with unions. Employee rights, consultation processes, and adherence to collective bargaining agreements are upheld.





08

GENERAL INFORMATION

CONTACT INFORMATION



PHYSICAL ADDRESS

248/35 Teanong,
Ext 11 Gedi Street,
Tembisa
1632



POSTAL ADDRESS

01 Watsonlaan Meant,
Pofadder,
Northern Cape,
8890



PHONE NUMBERS

Lux Mahasha
+27 73 074 7950
+27 84 651 1010



EMAIL

luxsantcp@gmail.com



WEBSITE

www.luxsantconstruction.com



SOCIAL MEDIA

Instagram: @luxsantconstruction
LinkedIn: Moroko Lux Mahasha



GENERAL INFORMATION

BANKING INFORMATION



ACCOUNT HOLDER

Luxsant Construction and Projects



BANK

First National Bank



ACCOUNT NUMBER

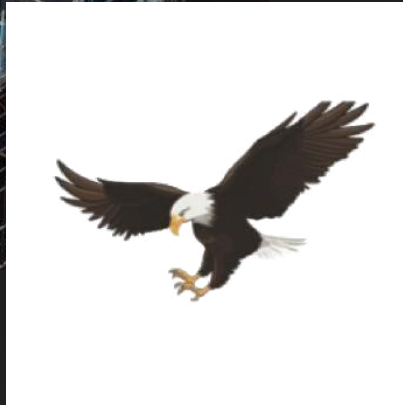
62354213490



ACCOUNT TYPE

Business Cheque Account

MINTIRHO YA VULAVULA



CLOSING STATEMENT

Thank you for considering **Luxsant Construction & Projects** as your trusted partner. We appreciate the opportunity to discuss how we can bring your vision to life with integrity, innovation, and unmatched service.

GET A QUOTE NOW

luxsantcp@gmail.com

+27 73 074 7950 | +27 84 651 1010

Reach out to us for consultations, inquiries, or partnership opportunities. We look forward to collaborating with you on your next groundbreaking project.